

# 10 Regulations Threatening Reliability

## EPA Power Plant Rule (Final, May 2024)

High costs, technological and infrastructure uncertainty, and unworkable timelines for emission reductions, based on carbon capture, will force coal retirements and threaten use of gas as a baseload resource, undermining reliability.

## Existing Gas Power Plant Rule (Proposal expected, fall 2024)

A broad swath of existing gas power plants could face more stringent greenhouse gas emissions limitations that, when combined with the final power plant rule, will likely compound reliability challenges.

## Ozone Transport Rule (Final, June 2023)

Requires many co-op coal units to install expensive systems or take drastic steps to reduce certain emissions of nitrogen oxides, likely forcing the early closure of many essential power plants.

## Mercury and Air Rule (Final, May 2024)

Mandates sharp reductions in power plant emissions of mercury and particulate matter, requiring some plants to shut down or install expensive control technologies and monitoring systems.

## Particulate Matter Air Standards (Final, March 2024)

Substantially reduces allowable levels of particulate matter, triggering more stringent permitting requirements and costly controls for new natural gas power plants in many parts of the country.

## Regional Haze Rule (Proposals expected, August 2024)

At least 15 states will be subject to federal plans to reduce emissions in accordance with the rule. Co-ops in those states could be required to install expensive emissions controls.

## Power Plant Wastewater Rule (Final, May 2024)

Will force co-op coal units to install expensive, unproven technology to meet stringent limits, wasting investments required by the 2020 rule and likely forcing early closure of essential power plants.

## Legacy Coal Ash Rule (Final, May 2024)

This broad, one-size-fits-all regulation will impose substantial costs on co-ops, making it more difficult for them to invest in new infrastructure projects needed to ensure electric reliability.

## NEPA Phase 2 Rule (Final, May 2024)

Despite recently enacted reforms to improve the National Environmental Policy Act process, this rule adds requirements that would complicate and delay environmental reviews for infrastructure projects, including transmission lines.

## 2023 WOTUS Rule (Final, September 2023)

Expands "Waters of the United States" federal jurisdiction over water features, beyond what is legally allowed, which will increase costs and delay critical projects that require Clean Water Act permits.

For more information visit  
[cooperative.com/10regs](https://cooperative.com/10regs)



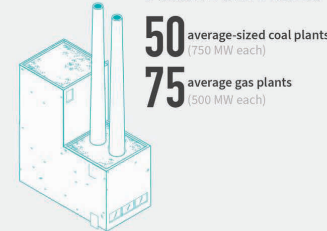
# Power Supply

Third in a series

Electricity use is rapidly increasing across the country, with peak national demand set to skyrocket by an estimated 38 gigawatts over the next four years. New capacity, from both fossil fuels and renewables, will need to be built (along with new transmission, energy storage and demand management), but there are large differences between the various generation types. Here's how much of each would be required to meet the need.

## Firm Power

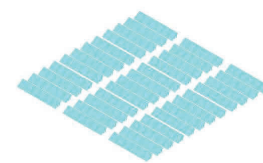
### Fossil Fuel Plants



## Intermittent Power

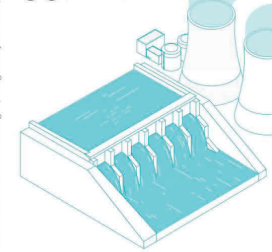
### Solar

127,000,000 solar panels\*  
(300 W each)  
At ~6 acres per megawatt, this would require  
228,000 acres (or 356 square miles) of land.



### Nuclear and Hydropower

38 average nuclear or large hydro plants  
(1 GW each)



### Wind

15,000 modern wind turbines\*  
(3.5 MW each)

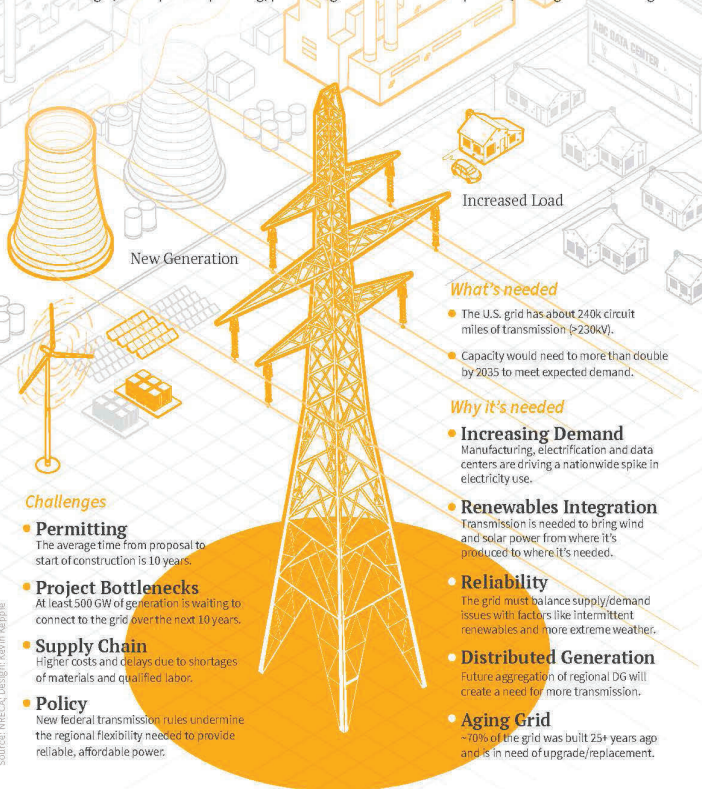


\*Intermittency and low capacity factor for solar (15-30%) and wind (30-40%) means peak generation will not always coincide with peak demand. Facilities would need to be significantly overbuilt and large amounts of battery storage would be needed to preserve round-the-clock reliability.

# Power Transmission

Fourth in a series

Most experts agree that the U.S. grid will need thousands of miles of new and upgraded transmission in order to meet skyrocketing electricity demand and connect new generation sources while ensuring that power remains reliable and affordable. The ability to site and build this critical infrastructure, however, is being weighed down by supply chain bottlenecks and clouded by new federal regulations that could lead to a more rigid, less equitable planning, permitting and cost-allocation process, among other challenges.



# BIG COUNTRY ELECTRIC COOPERATIVE Membergram

Tuesday, September 24

VIRTUAL ANNUAL MEETING  
Online all day

ENERGY CREDITS for each registered voter.  
Votes shall be cast in advance online or by returning the ballot in your September *Texas Co-op Power* magazine and Annual Report; please read it for information and instructions.

MEMBER APPRECIATION OPEN HOUSE  
Come & Go, 4-7 p.m. at each BCEC Office

Snacks & Door Prize Drawings for  
Registered Members who stop by!

One Day, Two Events!

## One Day, Two Events: Virtual Annual Meeting & Member Appreciation Open House

On Tuesday, September 24, visit the [bigcountry.coop](https://bigcountry.coop) website, as the annual report, video, and director election results will be posted by 10 a.m. Then, join us at any of the BCEC offices from 4:00-7:00 p.m. for our member appreciation open houses. We will have snacks and door prize drawings for registered members who stop by!

Voting credentials were included in *Texas Co-op Power's* Annual Report, which was mailed to each member of record as of August 2, 2024. If you became a member of BCEC after August 2, 2024, please contact [smclen@bigcountry.coop](mailto:smclen@bigcountry.coop) to obtain voting credentials and instructions.

[www.bigcountry.coop](https://www.bigcountry.coop)

September 2024

## LABOR DAY

**BCEC WILL BE CLOSED ON  
MONDAY, SEPTEMBER 2, IN  
OBSERVANCE OF LABOR DAY.  
PHONES WILL BE ANSWERED  
AND CREWS WILL RESPOND  
TO OUTAGES.**

**Why? Vote and Participate in  
the Virtual Annual Meeting  
of YOUR Electric Cooperative?**

### Cooperative Principle #2: Democratic Member Control

Cooperatives are democratic organizations controlled by their members, who actively participate in setting policies and making decisions. Directors are elected from among the membership and are accountable to them. Cooperative members have equal voting rights: one member, one vote.

Registered voters who submit a valid ballot will **receive a \$15 electric bill credit**. One credit per membership.

**Filter  
Easy**

**Home Air Filters Delivered  
When It's Time To Change Them.**

When was the last time you changed your air filters? Chances are it wasn't recently. Let FilterEasy do the remembering while you enjoy improved indoor air quality, lower bills, and better maintenance of the most expensive appliances (HVAC & furnace) in your home!







### Committed to Community

For complete information about our Operation Round Up program or to opt out of participation, visit [bigcountry.coop/operation-round-up](http://bigcountry.coop/operation-round-up).

## Small Change, Big Impact

Since its inception in late 2014, our Operation Round Up program has been quietly yet powerfully making a difference in our community. It's more than just spare change—it's a collective force for good that has distributed a remarkable **\$491,768.32** to meet food needs, support food banks, provide shelter, address health needs and rescue organizations, fund educational projects, support childcare programs and assist other special needs

But how does Operation Round Up work? It's simple and ingenious. Each month, our generous members voluntarily round up their electric bills to the nearest dollar. That small change, often just a few cents, is pooled together into a fund. These seemingly insignificant contributions add up quickly, creating a substantial resource for community support. These funds are distributed to individuals and organizations for charitable purposes within the counties we serve: Borden, Fisher, Garza, Haskell, Jones, Kenan, Mitchell, Nolan, Scurry, Shackelford, Stonewall, and Throckmorton.

### Making a Difference Together

Through Operation Round Up, we've been able to assist a wide range of local initiatives. Whether it's supporting food banks, funding educational programs, or helping families in crisis, the impact of this program is felt across our community. Each dollar contributes to a story of hope and resilience. All funds are kept separate from the cooperative, contributions are tax-deductible, and applications are handled with utmost confidentiality and respect. Every penny stays within the counties BCEC serves.

If you haven't joined the program yet, it's never too late to start. Simply contact our office to enroll and begin rounding up your bill each month. Thank you to all our members who have made Operation Round Up a success.

**Together, we're proving that small change can indeed make a big impact.**

## Safety Appreciation Day

Big Country EC recently hosted a Safety Appreciation Day, underscoring the importance of cultivating a culture that prioritizes safety. The event featured various presentations and demonstrations aimed at enhancing employees' awareness and skills in maintaining a safe work environment.

The day began with a session by local chiropractor David King, who discussed stretches and exercises to alleviate and prevent future injuries, emphasizing proactive health measures. This was followed by an informative presentation from Scurry County and Fisher County paramedics on "how to stop the bleed" in emergency situations, equipping employees with essential first aid skills.

The event concluded with the Safety Analysis Team (SAT) conducting a field demonstration of a pole changeout, showcasing everyday safety practices. Employees also participated in hands-on activities, such as tossing beanbags and a football while wearing rubber gloves, to experience the challenges of using safety equipment. The SAT further demonstrated the advantages of using electrical tools over manual ones, highlighting how newer tools enhance safety practices.

Creating a culture that values safety is crucial for any organization. It ensures employees feel secure and supported, reduces the risk of accidents, and promotes overall well-being. By continually investing in safety education and practices, Big Country EC demonstrates its unwavering commitment to the health and safety of its employees.



## Celebrating 26 Years of Dedication: Eileen Goodgame Retires

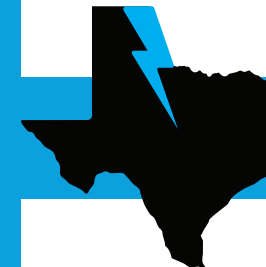
After an incredible 26 years of service to Stamford Electric Cooperative and Big Country Electric Cooperative, Eileen Goodgame retired on August 1.

Family, friends, and coworkers gathered to celebrate her years of dedicated service and her embarkment on a well-deserved journey into retirement. Eileen plans to spend lots of time with her grandkids and family.

Eileen began her career with the cooperative as an accountant at Stamford Electric Cooperative in 1998 and continued on after Stamford and BCEC consolidated. She finished her career as a Senior Staff Accountant.

Eileen's commitment, hard work, and dedication have left a lasting mark on our cooperative, and she will be sincerely missed. Throughout her nearly three-decade tenure, she not only witnessed but actively participated in the evolution of our cooperative, from the earlier days to the technological advancements of today.

Join us in bidding farewell to Eileen. Big Country EC expresses our warmest gratitude for her service and the impact she has had on our cooperative.



[www.bigcountry.coop](http://www.bigcountry.coop)

### Office Hours

Monday - Thursday: 7:30-12:00, 1:00-5:30  
Friday: 7:30-11:30

### Contact Us

Toll Free: 1-888-662-2232  
Roby: (325) 776-2244  
Stamford: (325) 773-3684  
Snyder: (325) 573-3161

### Report Outages

Please **call** your local BCEC office to report power outages.



## We're Mobile!



Access your BCEC account anytime with SmartHub! Download the app for your mobile device today by visiting [www.bigcountry.coop](http://www.bigcountry.coop) or searching for SmartHub in the app store.

### Ask about our partnerships with:



**Rural Development Assistance Available Through BCEC**  
BCEC is an Equal Opportunity Lender.

Big Country Electric Cooperative, Inc. has a limited amount of funds available for low-interest loans to qualified applicants to stimulate rural development. Applicant does not have to be a member of Big Country Electric Cooperative. Please contact Sarah McLaren at [smclen@bigcountry.coop](mailto:smclen@bigcountry.coop) for details.



Call 811 at least 2 working days before you dig.  
Visit [www.texas811.org](http://www.texas811.org) for more information.

**Agricultural Tax Exemptions** - In order to claim an exemption from Texas sales and use taxes on electricity and other items used in agricultural and timber operations, you are required to provide us with a registration number on Texas Agriculture Sales and Use Tax Exemption Certification Form 01-924. All water wells should be exempt if used for irrigation or watering livestock. The Texas Comptroller's Office issues the registration number and those wanting to claim the exemption must fill out an application. Registration numbers must be renewed every four years. Applicants can request a paper application to mail in by calling 1-800-252-5555 or download a copy from the comptroller's website, [www.getreadytexas.org](http://www.getreadytexas.org). The generic exemption certificate, Form 01-339, cannot be used to claim the agricultural exemption. Accounts that do not have the new required form on file will be subject to taxation.  
**Commercial Tax Exemption Records** - A completed and signed exemption form is required for each commercial tax exempt account. Accounts that do not have current exemptions on file will be changed to taxable accounts. Any refunds for taxes must be claimed from the State of Texas. Thank you for your help.